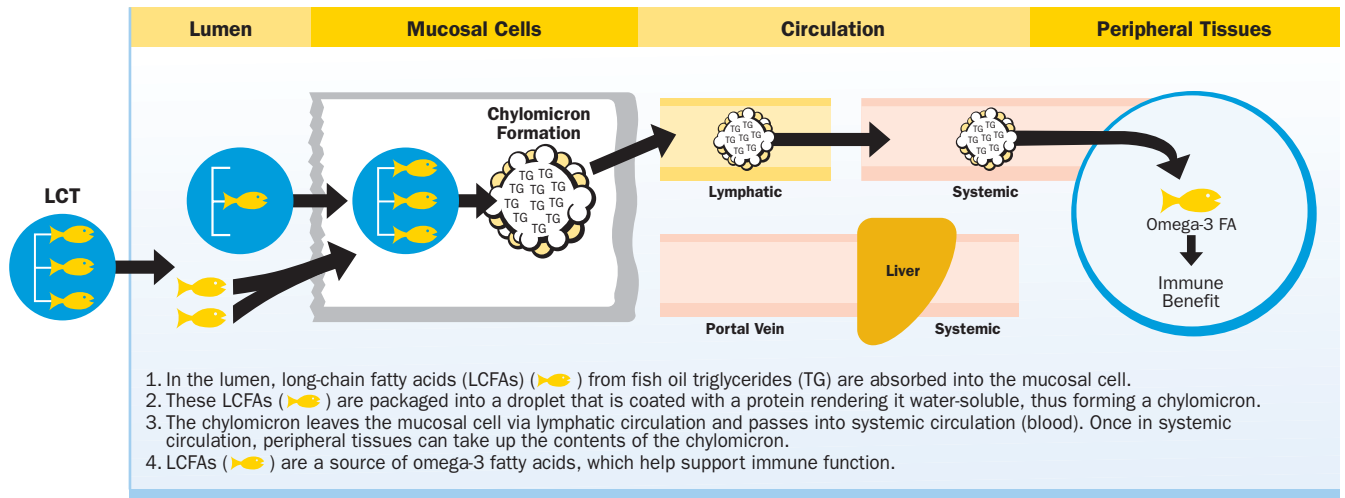
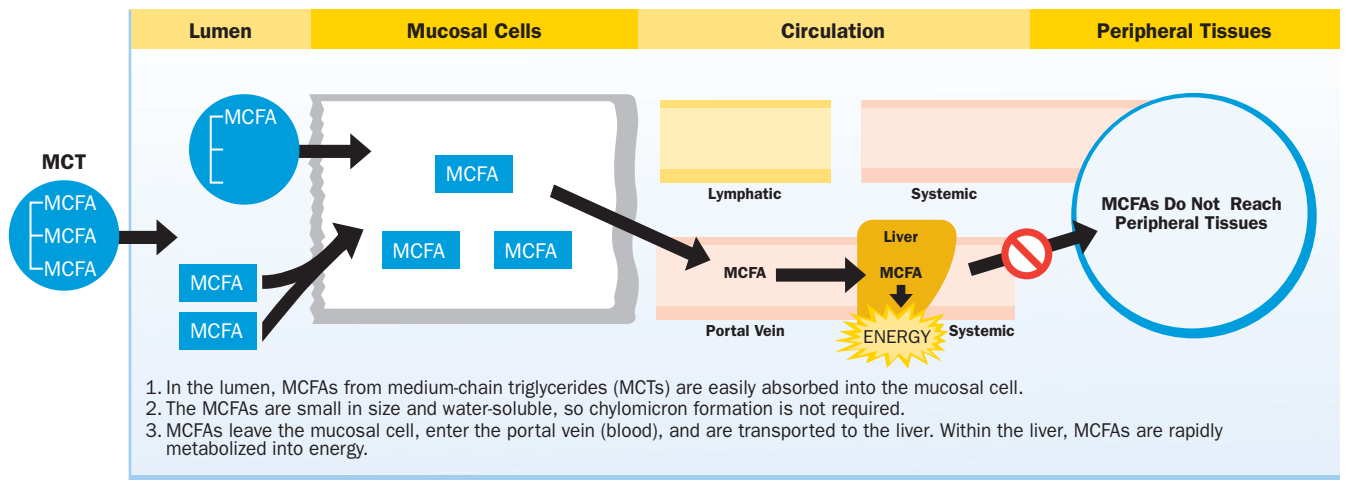


Structured Triglyceride* Absorption and Utilization

Long-Chain Triglycerides

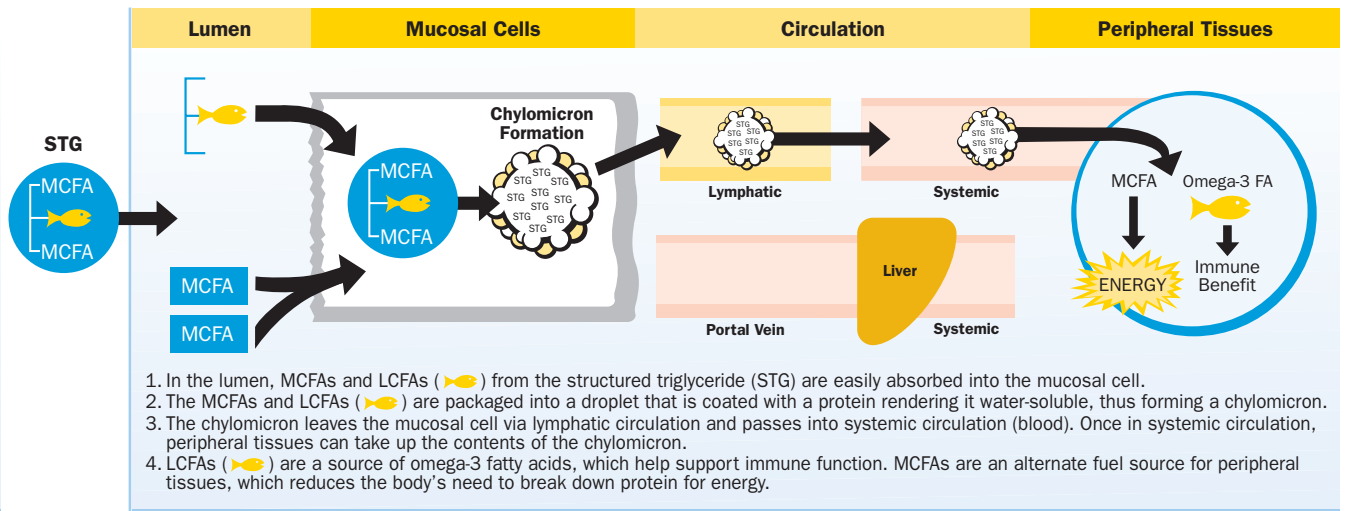


Medium-Chain Triglycerides



References: DeMichele SJ, Bistran BR: Structured triacylglycerols in clinical nutrition, in Mansbach CM II et al (eds): *Intestinal Lipid Metabolism*. New York: Kluwer Academic/Plenum Publishers, 2001.

Structured Triglyceride*



References: DeMichele SJ, Bistran BR: Structured triacylglycerols in clinical nutrition, in Mansbach CM II et al (eds): *Intestinal Lipid Metabolism*. New York: Kluwer Academic/Plenum Publishers, 2001.

* As part of a structured lipid.

Structured Lipids in Enteral Formulas

A Ross Exclusive



Pivot® 1.5 Cal

- **Calorically dense (1.5 Cal/mL)** to provide energy when volume is restricted
- **Very-high protein**, 25% of calories (93.8 g/L), to support protein synthesis and tissue repair
- **Peptide-based protein** for easier absorption and tolerance
- **Arginine** (13 g/L) to help support the immune system and wound healing
- **Omega-3 fatty acids (EPA, 2.6 g/L and DHA, 1.3 g/L)** to support immune function
- **Structured lipid**, 40% of fat, for enhanced fat and fat-soluble-vitamin absorption
- **Fructooligosaccharides (FOS)** (7.5 g/L) to help maintain GI-tract health and stimulate water and electrolyte uptake in the colon—important for diarrhea management

AVAILABILITY

8-fl-oz cans; 24/case
#58013

Ross Ready-To-Hang®
1000-mL prefilled containers; 8/case
#58015

HCPCS
Code B4154, applicant



Optimental®

- **1.0 Cal/mL**
- **Elemental protein**, 20.5% of calories (51.3 g/L), for easier absorption and tolerance
- **Arginine** (5.5 g/L) to support the immune system and wound healing
- **Omega-3 fatty acids (EPA, 2.3 g/L and DHA, 0.97 g/L)** to support immune function
- **Structured lipid**, 60% of fat, for enhanced fat and fat-soluble-vitamin absorption
- **Fructooligosaccharides (FOS)** (5 g/L) to help maintain GI-tract health and stimulate water and electrolyte uptake in the colon—important for diarrhea management

AVAILABILITY

8-fl-oz cans; 24/case
Vanilla #54638

Ross Ready-To-Hang®
1000-mL prefilled containers; 8/case
#57045

HCPCS
Code B4153