

# The New Taste of Tolerance



# The New Shape of Tolerance

Therapeutic Semi-Elemental Nutrition for Children

# Taste Is The Difference

Do you have patients that could begin oral intake, but refuse to drink other semi-elemental formulas?

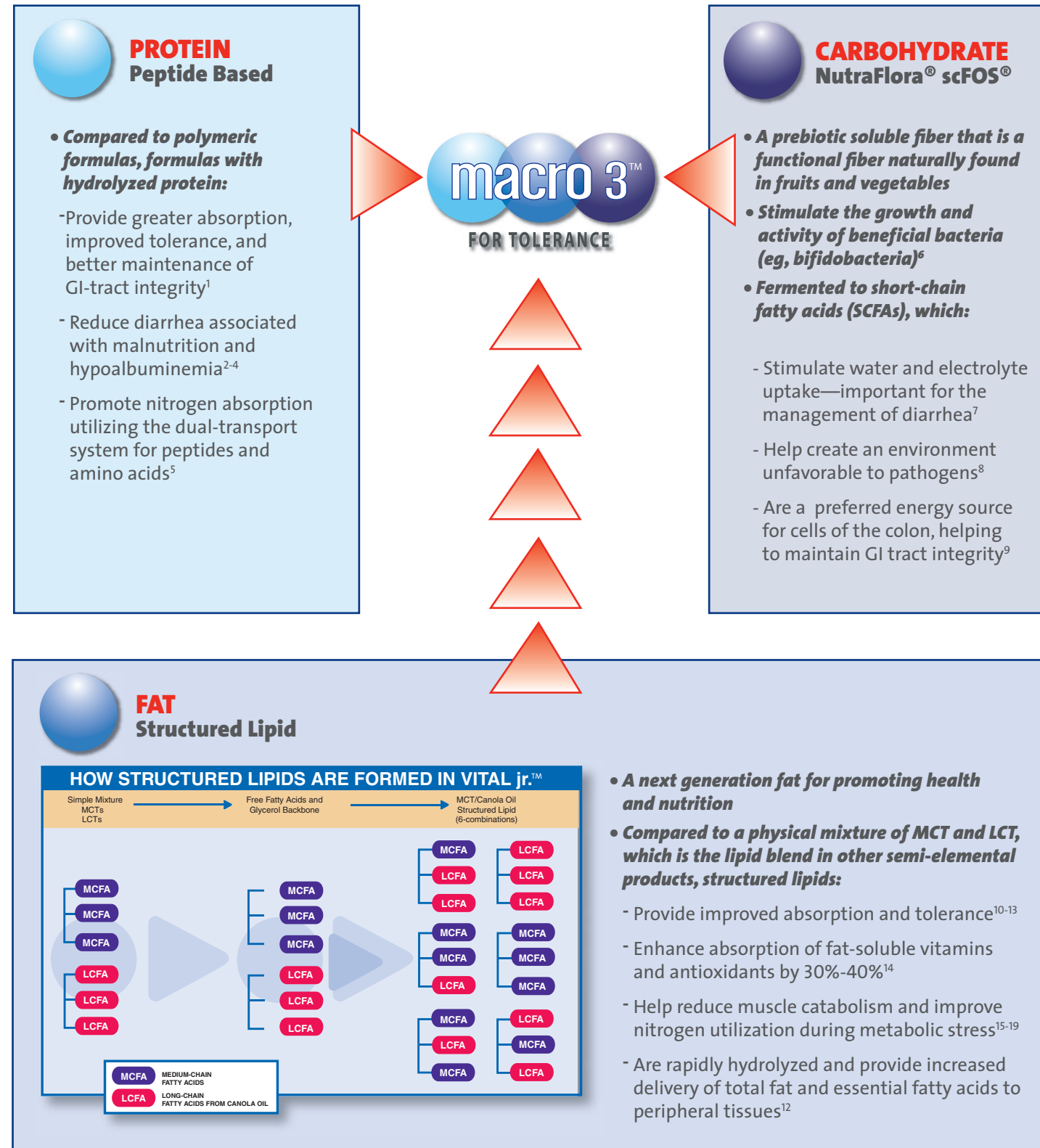
- Vital jr.™ is available in two delicious “Kid-Approved” flavors — Vanilla and Strawberry — to help oral compliance
- The flavors were tested with children, and THEY said Vital jr. tastes great
- Vital jr. received the 2007 ChefsBest™ Award for Best Taste



\* The ChefsBest Award for Best Taste is awarded to the brand rated highest overall among leading brands by independent professional chefs. This award is only given if there is a statistically significant difference between products in a category.

# Tolerance Is The Difference

**macro 3** is an advanced **PROTEIN, FAT, and CARBOHYDRATE** blend specifically designed for excellent tolerance and absorption



# Safety Is The Difference

Introducing Vital jr. in the prefilled container designed with kids and clinicians in mind

## HELPS REDUCE RISK OF TOUCH-CONTAMINATION

- Meets HACCP recommendations<sup>20</sup>
- Usable up to 48 hours after initial spike when clean technique and only one new feeding set is used

## MINIMIZE FORMULA HANDLING

- Cap has recessed port and is covered by a protective “No IV” peel-off sticker

## EXCLUSIVE ROSS SEMIRIGID CONTAINER

- Easy to distinguish from an IV-type bag
- Easy to handle and store
  - Reduces preparation time
  - Stands upright to save storage space

## EXCLUSIVE 500-ml SIZE

- Size is more appropriate for use in some pediatric patients and may reduce waste



# The Vital<sup>jr.</sup>™ Difference for Oral and Tube Feeding

Vital jr. is designed for children ages 1-13 with malabsorption and maldigestion and for patients with:

- Celiac Disease
- Inflammatory Bowel Disease
- Cystic Fibrosis
- Pancreatic Disorders
- Chronic Diarrhea
- Short-Bowel Syndrome

## NUTRITIONAL INFORMATION

	Per 8 fl oz	Per 500 mL
Calories	237	500
Protein, g	7.1	15.0
Total Fat, g	9.6	20.0
Total Carbohydrate, g	31.7	67.0
Dietary Fiber, g	0.71	1.5
L-Carnitine, mg	4.0	8.5
Nutrient Density (Cal/mL)	1.0	1.0
Protein (% Cal)	12	12
Carbohydrate (% Cal)	53	53
Fat (% Cal)	35	35
Kosher	Yes	Yes
Lactose-Free	Yes	Yes
Gluten-Free	Yes	Yes
Osmolality (mOsm/kg H <sub>2</sub> O)	390	390

Use under medical supervision.

\* Meets or exceeds 100% of DRIs for protein, vitamins, and minerals for children 1 to 8 years of age in 1000 mL; for children 9 to 13 years of age in 1500 mL.

## The only pediatric semi-elemental product:

- With “Kid-Approved” Taste
- With Macro 3™ for Tolerance
- In the 500-mL Prefilled Container
- Indicated for Children 1 to 13 Years of Age\*
- With 50% MCT PLUS Structured Lipid for Easier Absorption
- With Certified Kosher Status



### AVAILABILITY

8-fl-oz cans; 24/case

Vanilla #59762  
Strawberry #59760

500-mL Ready-To-Hang®;  
8/case

Vanilla #50096

- Daniel H. Molecular and integrative physiology of intestinal peptide transport. *Annu Rev Physiol* 2004;66:361-384.
- Brinson RR, Kolts BC. Diarrhea associated with severe hypoalbuminemia: A comparison of a peptide-based chemically defined diet and standard enteral alimentation. *Crit Care Med* 1988;16:130-136.
- Brinson RR, Pitts VL, Taylor AE. Intestinal absorption of peptide enteral formulas in hypoproteinemic (volume expanded) rats: A paired analysis. *Crit Care Med* 1989;17:657-660.
- Ziegler F, Ollivier JM, Cynober L, et al. Efficiency of enteral nitrogen support in surgical patients: Small peptides v non-degraded proteins. *Gut* 1990;31:1277-1283.
- Zaloga GP. Intact proteins, peptides, and amino acid formulas, in Zaloga GP (ed). *Nutrition in Critical Care*. St Louis: Mosby, 1994, pp 59-80.
- Gibson GR, Roberfroid MB. Dietary modulation of the human colonic microbiota: Introducing the concept of prebiotics. *J Nutr* 1995;125:1401-1412.
- Bowling TE, Raimundo AH, Grimble GK, Silk DB. Reversal by short-chain fatty acids of colonic fluid secretion by enteral feeding. *Lancet* 1993;342:1266-1268.
- Royall D, Wolever TM, Jeejeebhoy KN. Clinical significance of colonic fermentation. *Am J Gastroenterol* 1990;85:1307-1312.
- Mitsuoka T, Hidaka H, Eida T. Effect of fructo-oligosaccharides on intestinal microflora. *Nahrung* 1987;31:427-436.
- McKenna MC, Hubbard VS, Bieri JG. Linoleic acid absorption from lipid supplements in patients with cystic fibrosis with pancreatic insufficiency and in control subjects. *J Pediatr Gastroenterol Nutr* 1985;4:45-51.
- Tso P, Karlstad MD, Bistrrian BR, DeMichele SJ. Intestinal digestion, absorption, and transport of structured triglycerides and cholesterol in rats. *Am J Physiol* 1995;268(4 Pt 1):G568-G577.
- Tso P, Lee T, DeMichele SJ. Lymphatic absorption of structured triglycerides vs. physical mix in a rat model of fat malabsorption. *Am J Physiol* 1999;277(2 Pt 1):G333-G340.
- Kenler AS, Swails WS, Driscoll DF, et al. Early enteral feeding in postsurgical cancer patients: Fish oil structured lipid-based polymeric formula versus a standard polymeric formula. *Ann Surg* 1996;223:316-333.
- Tso P, Lee T, DeMichele SJ. Randomized structured triglycerides increase lymphatic absorption of tocopherol and retinol compared with the equivalent physical mixture in a rat model of fat malabsorption. *J Nutr* 2001;131:2157-2163.
- DeMichele SJ, Karlstad MD, Babayan VK, et al. Enhanced skeletal muscle and liver protein synthesis with structured lipid in enterally fed burned rats. *Metabolism* 1988;37:787-795.
- DeMichele SJ, Karlstad MD, Bistrrian BR, et al. Enteral nutrition with structured lipid: Effect on protein metabolism in thermal injury. *Am J Clin Nutr* 1989;50:1295-1302.
- Swenson ES, Selleck KM, Babayan VK, et al. Persistence of metabolic effects after long-term oral feeding of a structured triglyceride derived from medium-chain triglyceride and fish oil in burned and normal rats. *Metabolism* 1991;40:484-490.
- Teo TC, DeMichele SJ, Selleck KM, et al. Administration of structured lipid composed of MCT and fish oil reduces net protein catabolism in enterally fed burned rats. *Ann Surg* 1989;210:100-107.
- Teo TC, Selleck KM, Wan JM, et al. Long-term feeding with structured lipid composed of medium-chain and n-3 fatty acids ameliorates endotoxic shock in guinea pigs. *Metabolism* 1991;40:1152-1159.
- Pathogen Reduction: Hazard Analysis and Critical Control Point (HACCP) Systems; Final Rule. Washington, DC: Food Safety and Inspection Service, US Department of Agriculture, 1996, 152 Code of Federal Regulations, 9 CFR Parts 304, 308, 310, 320, 327, 381, 416, 417.

**NutraFlora®** and **scFOS®** are not trademarks of Abbott Laboratories.  
PREBIOTIC • SOLUBLE FIBER

© 2007 Abbott Laboratories Inc.  
70746/JUNE 2007 LITHO IN USA

**ROSS** ROSS PRODUCTS DIVISION  
ABBOTT LABORATORIES INC.  
CCLUMELUS, OHIO 45219-1724 USA

  
**ROSS** NUTRITION  
GROWING STRONG KIDS